

HD Battery Powered IP Camera



Quick Start Guide

BOX CONTENTS

- 1 x Battery Powered IP Camera
- 1 x Mounting Bracket
- 1 x Mounting Bracket Template
- 1 x 32GB SD card (*already inserted*)
- 1 x Warning sticker
- 1 x USB charging cable
- 3 x Mounting screws + wall plugs

IMPORTANT INFORMATION – PLEASE READ

The following quick start guide provides steps for regular everyday installation, setup and usage of the HD Battery Powered IP Camera.

More advanced product information, app features, troubleshooting and FAQs can be found by scanning the QR codes opposite, or by visiting the FAQ section of the app.

A working 2.4Ghz Wi-Fi connection is required to set up this device. ***This device will not connect with 5.0Ghz networks.***

It is recommended to set up your camera with the app before physical installation, so you can use the live playback on your phone to pick an installation spot with the best view.

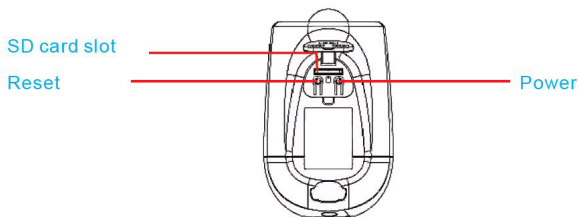
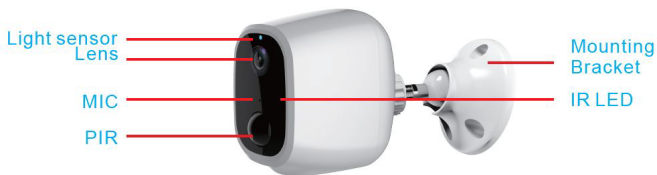
Product FAQs & Info



Tuya Smart Help Centre



CAMERA GUIDE



SETUP & APP PAIRING

1. Download the Tuya Smart app on your phone.
Search Tuya Smart on your app/play store, or scan below.



Note: the Tuya Smart app has various sophisticated features like home automation, cloud storage Alexa/Google pairing etc. These features are not required to use the doorbell day-to-day and are not covered in this quick start guide. To learn more about those features, consult the FAQ within the app.

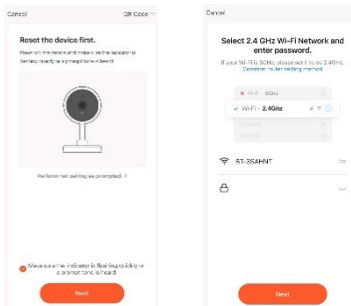
2. 'Sign Up' to create an account with your email. Complete the verification steps and set your password.
3. On the Home screen, choose 'Add Device' or '+' in top right.
4. Choose 'Add Manually', then 'Camera and Lock', then select 'Smart Camera (Wi-Fi)'



5. Press and hold the ON button on your camera until you hear a prompt sound. The light should begin to slowly flash red.

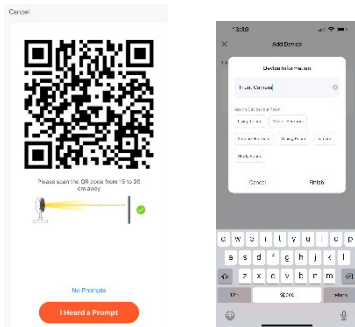
6. Tick the box on the app and press Next.

7. Enter your Wi-Fi details carefully. 2.4Ghz only. Press Next.



8. Hold the QR code that appears up to the camera lens until you hear a tone. Press 'I heard a prompt'.

9. Pairing will complete when you hear a tone. Name your camera and press done. **You are now setup with the app.**



CHARGING THE CAMERA

The camera contains 2 x long life 18650 lithium-ion batteries that, on a full charge, can provide up to 6 months continuous usage, subject to the amount of activations and connections.

The batteries are fully sealed within the unit and controlled using the On/Off switch – **DO NOT ATTEMPT TO ACCESS THE BATTERIES, IT COULD CAUSE SERIOUS HARM.**

The camera should not require charging before first use and the battery life is displayed clearly within the app's live view.

When you do require charging simply remove the camera from its bracket by carefully unscrewing it anti-clockwise.

Utilise the micro USB cable provided and connect it to camera's charge port and a suitable 5V/2A power supply.

A full charge should take approximately 4 hours. The light may blink blue during charging. You can use your app to check the charge percentage at your leisure and remove when happy.

INSTALLING THE CAMERA

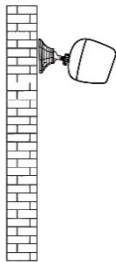
Your camera is suitable for use via free-standing or mounting.

For free-standing, simply place the camera flat-bottom side down in your required location. This is useful indoors but not advised when using externally, in case of theft.

For mounting, utilise the provided bracket and screws. The camera screws on securely via the fastening hole on the rear of the unit. **Install the bracket without the camera attached.**

The mounting bracket is suitable for install on all surfaces and features a ball mount that allows the camera angle to be adjusted by hand without camera or bracket removal.

Do not install or stand on surfaces containing metal – this can affect the camera's wireless signal.



It is recommended to hold the camera in position before installing the mounting bracket, checking playback on the app's live view to ensure your desired area is covered.

Mark the location with the template and then hold the bracket in place for drilling. Complete drilling to the screw depth and affix the screws, ensuring a flush fit against the surface.

You can now affix the camera by rotating it carefully onto the thread in a clockwise direction. Use both hands and take care not to drop the camera. To detach the camera for charging or other reason, unscrew carefully in an anti-clockwise direction.

USING THE APP

Home: View and access all devices you have added.

Scene: If using automation etc. (not required); see Tuya Help.

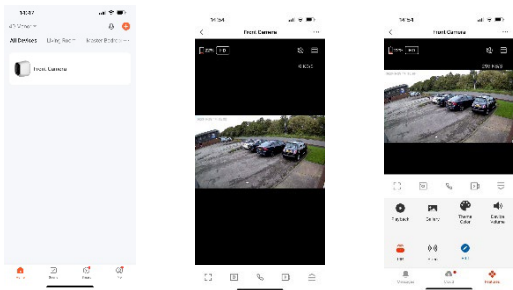
Smart: If using automation etc. (not required); see Tuya Help.

Me: Account info and message centre for doorbell alerts.

Live View / Quick Toolbar / Control Panel

Opening the camera presents the live view, plus a quick toolbar and control panel.

Here you can view and capture footage, plus change settings.



Quick Toolbar Icons:

Square: Rotates view into full screen mode.

Camera: Takes a screenshot, saving to your Gallery.

Phone Allows a two-way conversation.

Vid Camera: Records the current view to your Gallery.

Up Arrow: Expands the toolbar into the full Control Panel.

Control Panel Icons:

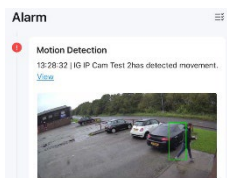
- Playback: A timeline of your captured footage.
- Gallery: View screenshots and footage you have saved.
- Theme: Edit your app background appearance.
- Volume: Change loudness of your external doorbell sound.
- PIR: Edit your motion capture sensitivity.
- Siren: Access and activate your external doorbell alarm.
- Edit: Manage button layout.

Within the Control Panel view you can also toggle to a quick view of the Messages page (which shows visitor/motion notifications) or the Cloud section for value-added purchases (third-party controlled and not required for day-to-day function).

Notifications and Visitors

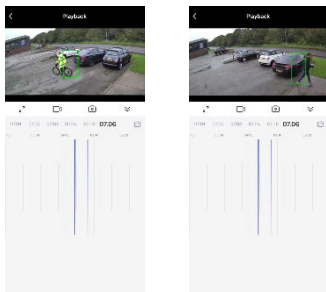
The system is preset to send notifications to your phone when the camera detects motion. Clicking on these shows a preview in the app's message centre; click View to access the live view/control panel. If it is in real-time, you can communicate with the visitor. If not, see next section.

You can also access these alerts in the Message Centre by clicking the Me section on the home page.



Viewing Past Footage

In Control Panel, select Playback. Here you can navigate to different dates and scroll the timeline to view captured footage, which is shown as blue blocks. The view will default to the most recent day of captured footage, you can select older dates by pressing the calendar icon.



Use two fingers to zoom in/out to navigate the playback bars easily. Swiping right auto-plays the next footage, or you can manually scroll left and right to select certain blocks. You can also screenshot/record footage to the app album here.

Sharing Footage

Any screenshots and recordings are saved to the Gallery in the control panel. From here you can select and share the clips in the multiple ways displayed.

Sharing the Camera

In Settings (three dots in top right), select Share Device and then Add Sharing. Choose your share method. The receiver must have the Tuya Smart app and account to accept.

Shared users can view footage but cannot edit settings. There is no limit to how many shares you can action. You can also remove shared users in this section.

Resetting the Camera

Press and hold the reset button until you hear a tone. The camera will re-enter pairing mode with the light flashing red.

Any footage within the app will be lost, so consider backing up/saving to your phone library if required. Current SD card footage will remain.

Removing the Camera from the App

In Settings, scroll to the very bottom and select Remove Device. **This clears all footage and settings.** Current SD card footage will remain.

Recommended Settings

Within the settings menu there are various tweaks you can make to your camera experience. The below are recommendations only, but in most cases will ensure good overall performance:

1. Edit the PIR sensitivity level to suit your needs; Low/Medium is usually suitable for most homes. Test what works for you.
2. Turn Activity Area ON in Detection Alarm Settings to pre-set only certain detection areas. Motion outside of your area will not be recorded or notified. Ideal for limiting to your own property. Also helps save battery life.
2. Turn Human Body Filtering ON in Detection Alarm Settings To only detect humans; this minimises false alerts from animals, vehicles etc., which reduces notifications and battery usage.
3. Set a low battery level in Power Management Settings. This will send a notification reminding you to charge.
4. Turn Offline Notification ON. This sends a notification if the doorbell loses signal for more than 30 minutes.

Reminder – purchasing VAS/Cloud Services is not required for this system. Doing so is at your own discretion. These services are ran independently by Tuya Smart as a third-party.

Reminder – home management, tap to run automation and Alexa/Google features are for advanced users only and are not required to use this device day-to-day. Users who want to use these features should consult the Tuya Help page or the FAQ & Feedback section within the app.

For troubleshooting steps, refer to the QR codes at the start of this manual.

Solon Security
Unit 40 Manor Industrial Estate
Flint, Flintshire
CH6 5UY

solon-group.com