

4T STROBE ALARM

Powerful multi-use alarm with strobe alert

Product Code: AL00037

Introduction

The 4T Strobe Alarm is fitted with a high intensity bulb that produces a flashing light when the 140dBs alarm is activated. The 4T uses a traditional pin activation and can be carried as a personal alarm or mounted to the wall as a panic alarm using the bracket provided

Operation

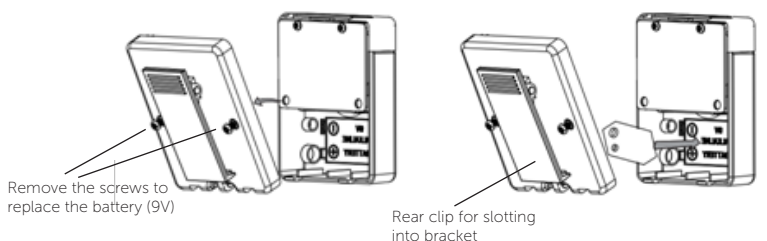
1. To operate the alarm, simply pull the ripcord pin out of the socket. To stop the alarm sounding, replace the ripcord pin into the socket on the top of the alarm.
2. To use as a torch, simply press in the button on the side of the unit.

The alarm can be used to protect a bag, simply place the alarm inside a bag and use the g-clip provided to hook onto your clothing (e.g. a belt loop or pocket). If the bag is taken, the pin will be removed from the alarm and the siren will activate.

To utilise as a panic alarm, affix the bracket to your wall with the screws provided and slot the alarm in/out as desired via the rear clip. Ensure your ripcord is hanging freely for easy-use.

Battery Replacement

1. Loosen the two screws on the back cover of the alarm with a small Phillips or Pozi screwdriver to access the battery compartment.
2. Remove the old battery and insert a fresh 9V battery in the same polarity.
3. Refit the back cover and tighten screws.



WARNING

The high output siren fitted to this quality personal alarm may cause ear damage if used at close range for a prolonged period of time. Keep away from children and pets ears. This product is designed for use as a deterrent; it does not guarantee protection or personal safety.