

24 HOUR SEGMENT TIMER

Energy Saving and Crime Prevention Device

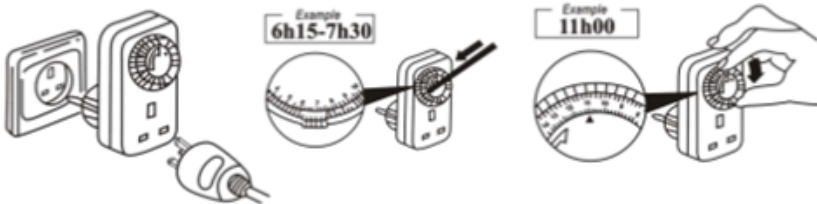
Product Code: EL00004

Introduction

The 24 Hour Segment Timer is a high quality timer which can be used to switch lights and electrical appliances (up to 3200W) on/off automatically. It works by manually setting 15 minute segments to an on/off position with the option to choose up to 96 segments on or off in a 24 hour period.

Operation of the Timer

1. To set the time/s you would like the 24 Hour Segment Timer to provide power, simply press the individual segments down around the timer, each segment allows 15 minutes of power.
2. Ensure the current time is set correctly by rotating the dial until the small black arrow is lined up with the correct time. For example, if it is 5pm, line the arrow up with the number 17.
3. Plug the 24 Hour Segment Timer into the desired socket and plug the appliance into the front of the timer.
4. Ensure the switch on the right hand side of the timer is set down to the clock icon. This means the socket is set to timer. When operating, the red LED indicator will illuminate.
5. To override the timer and enable the socket to provide power continuously, flick the switch up to the I icon. When operating, the red LED indicator will illuminate.
6. To change the set times simply pull the segments up to the default position and push the desired segments down.



1. Plug into the socket

2. Set the programme times

3. Set correct time

Icons



Timer setting (only provides power during the set times)



Override (provide continuous power)

Solon Security

Unit 40
Manor Industrial Estate
Flint, Flintshire
CH6 5UJ
solonsecurity.co.uk

Industry leaders in quality



FS 565100 EMS 655345

